

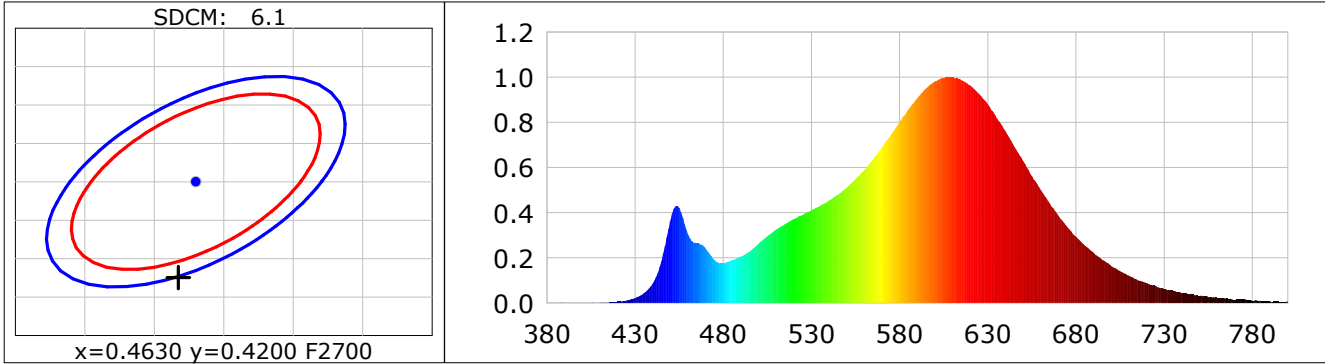
Lightsource Test Report

Product Information

Product Category: LED STRIP	Product Type: LED STRIP
Product Spec: THER 4	Product Number: 254
Manufacturer: TECSOLELED S.L.	Buyer: TECSOLELED S.L.

CIE Colorimetric Parameters

Chromaticity coordinates: $x=0.4617$ $y=0.4075$ $u(u')=0.2651$ $v=0.3510$ $v'=0.5265$
 CCT: $T_c=2650K$ ($duv=-0.00128$) Color Ratio: $R=0.258$ $G=0.718$ $B=0.024$
 Peak Wavelength: 608.7nm Half Bandwidth: 111.9nm
 Dominant Wavelength: 584.9nm Color Purity: 0.609
 CRI: $R_a=82.9$, $avgR(1\sim14)=78.6$, $avgR(1\sim15)=78.3$ TM30: $R_f=85$, $R_g=95$
 GAI: $GAI_BB_8=97.2$, $GAI_BB_15=105.9$, $GAI_EES=45.7$
 R1 =82 R2 =94 R3 =93 R4 =80 R5 =83 R6 =94 R7 =79 R8 =57
 R9 =11 R10=86 R11=80 R12=78 R13=85 R14=97 R15=74
 Color Quality Scale: $Q_a=82.7$, $Q_f=85.0$, $Q_p=85.3$, $Q_g=90.6$
 Q1 =78 Q2 =92 Q3 =86 Q4 =81 Q5 =83 Q6 =84 Q7 =84 Q8 =85
 Q9 =93 Q10=91 Q11=87 Q12=83 Q13=82 Q14=73 Q15=75



Photometric Parameters

Luminous Flux: 1487.7 lm Efficiency: 142.61 lm/W Radiant Power: 4.639 W
 Total mains efficacy: 132.06 lm/W Energy Efficiency Class: E (EU 2019/2015)

Electric Parameters

Voltage: 24.000V Current: 0.4347A Power: 10.43W
 Power Factor: 1.0000 Frequency: 0.00Hz

Test Information

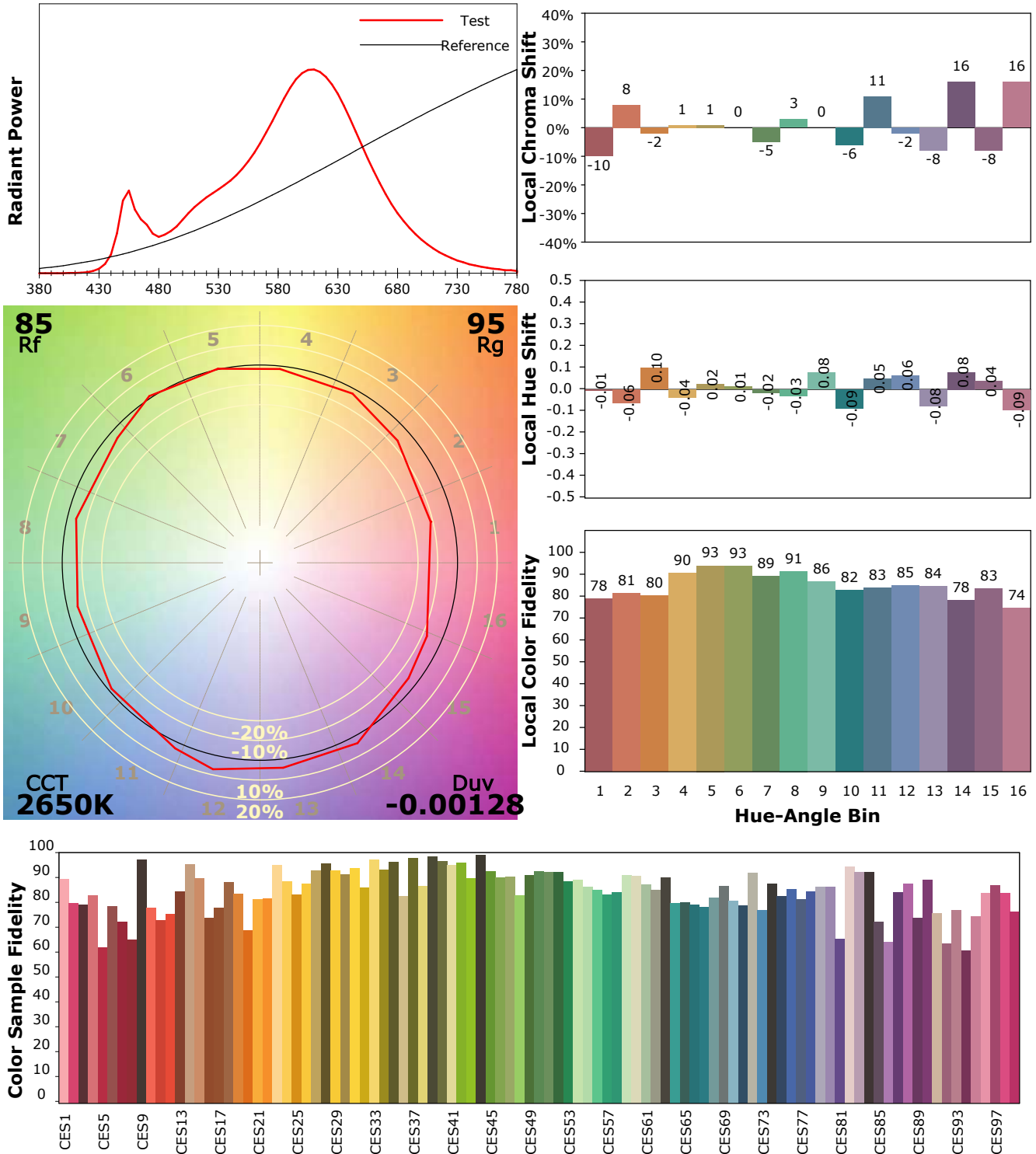
Scan Range: 380~800:1nm Photometric Method: sphere-spectroradiometer
 Stabilization Time: 0 Sec ALC.: 1.0000 Photometric Condition: Sphere diameter: 1.50m, 4PI
 Max of Signal: 48253 (2371) CCD Integration Time: 463.76 ms

IES TM-30-18 Color Rendition Report

Product Information

Product Category: LED STRIP
 Product Spec: 21059602440537
 Manufacturer: TECSOLELED S.L.

Product Type: LED STRIP
 Product Number: 254
 Buyer: TECSOLELED S.L.



Condition: Tx:22.3°C, Ti:19.8°C, R.H.:60%
 Test Lab: TECSOLELED S.L.
 Operator: JORDAN GIL DIAZ

Test Device: Inventfine CMS-2S (Plus)
 Test Time: 2021-10-28 15:23:21
 Inspector: